



SHERPA

SHared knowledge for Energy Renovation in
buildings by Public Administrations



TABLE OF CONTENTS

BACKGROUND	Page 3
OBJECTIVES	Page 4
METHODOLOGY	Page 5
TESTING	Page 6
TRANSFERRING	Page 9
CAPITALISING	Page 10
MAIN OUTPUTS	Page 11
MILESTONES & KEY DELIVERABLES	Page 12
PARTNERSHIP	Page 13



BACKGROUND

Several past EU projects, in particular strategic MED projects such as MARIE, ELIH-Med and PROFORBIOMED, among others, have highlighted the specific conditions and difficulties related to projects in Energy Efficiency in Buildings (EEB) within the MED area.

Concretely, the Policy Paper “Responding to challenges regarding energy efficiency and renewable energy in Mediterranean buildings” (2014), developed by AviTEm-France and SHERPA’s lead partner within the context of the three abovementioned MED projects, detected, as a consequence of geographical, climatic, social and economic specificities, a huge potential of energy saving.

The four main problems identified in the MED area with regards to the project implementation are: financing, internal structure of the public Administrations, training of the public workers and data collection systems.

These four barriers served to structure the testing work developed in the SHERPA project.



Provincial Library «Melchiorre Dèlfico», Teramo (Abruzzo)

OBJECTIVES

The project's overall objective is to reinforce the capacities of public administrations at regional and sub-regional level within the territories covered by SHERPA so as to improve energy efficiency in their public buildings' stock. To do so, a transnational, holistic and peer-to-peer model will be developed to work on the main barriers related to EEB strategies in public buildings, namely: **governance** structures; **information** gathering and usage; **awareness and training** of responsible staff; and **financing** of actions.

Furthermore, this Interreg MED modular project intends to contribute to speeding up the implementation of EU Directives on Energy Performance of Buildings (2010/31/EU) and on Energy Efficiency (2012/27/EU).



Directorate of Public Health & Social Care,
Regional Unit of Chania (Kriti)



Regional Council, Bologna (Emilia-Romagna)

METHODOLOGY

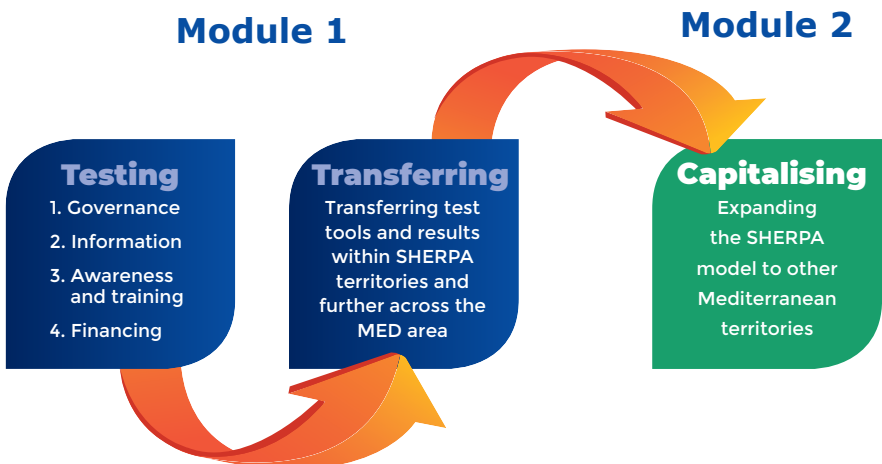
SHERPA is divided into two modules: **testing module and capitalising module.**

Testing module (2017 - 2018)

A transnational, holistic and peer-to-peer model will be developed to produce 100 EEB projects belonging to regional governments among the partner regions.

Capitalising module (2018 - 2019)

Another 100 EEB projects following this methodology will be carried out in buildings from partner regions' municipalities. It aims to ensure that results from the testing module are transferred and capitalised to as many Mediterranean municipalities and regions as possible.



TESTING

SHERPA WORKING GROUPS

In order to develop a transnational, holistic and peer-to-peer model, SHERPA has four interconnected Working Groups set up in the frame of the project's testing phase aiming at developing a roadmap to produce and implement EEB strategies:

The GOVERNANCE WG aims at the integration of the municipal SEAPs in the EEB regional strategies.

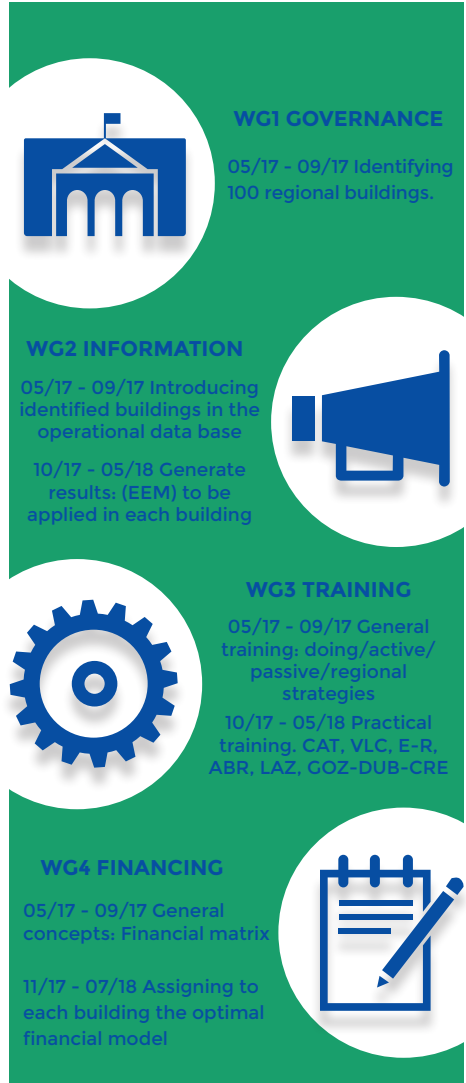
The INFORMATION SYSTEM WG develops an application that enables benchmarking among public buildings.

The TRAINING WG develops a training experience based on the "learning by doing" methodology, both on-line and classroom based.

The FINANCING WG prepares a tool for the financial characterization of the project. It analyses the economic viability of the project and determines the best financing formula

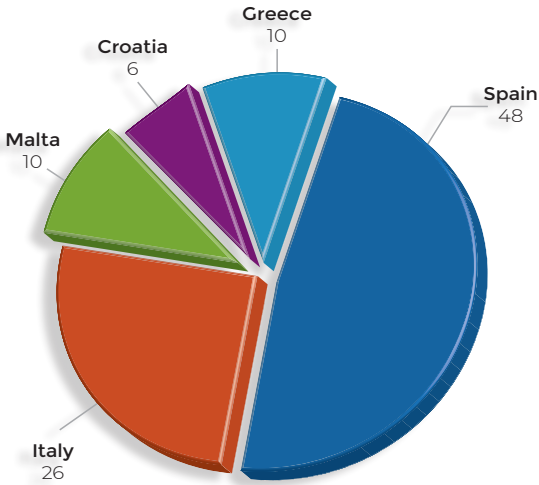
At the end of the testing phase, the SHERPA model will be replicated in municipalities and the good setting up of this model will be accredited by the procurement of the SHERPA Building Card.

SHERPA TESTING LIFECYCLE

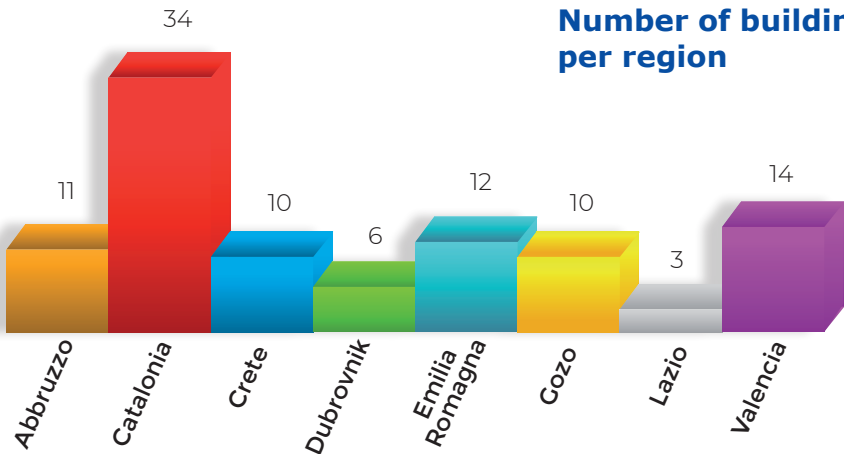


TESTING

100 regional buildings have been selected to take part in the testing phase:



Number of buildings per country

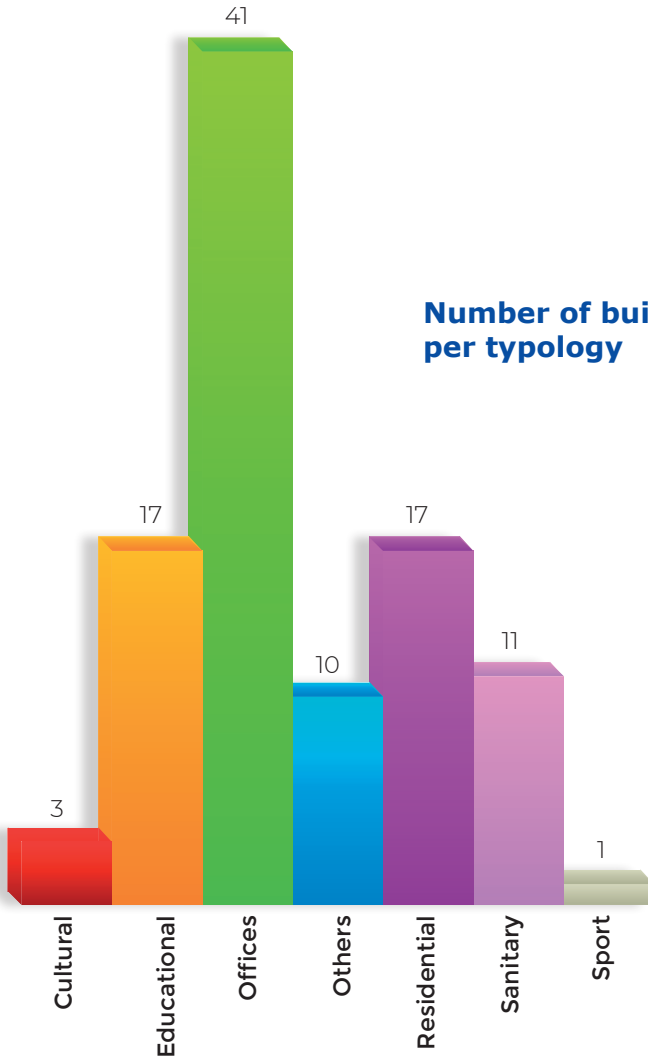


Number of buildings per region

TESTING



**Number of buildings
per typology**



TRANSFERRING

The aim of the transferring phase is to ensure results from the testing phase are transferred to as many municipalities and regions as possible within SHERPA's territories and further across the MED area in order for them to know about SHERPA and be aware of the possibilities to implement EEB projects in public buildings.

The transference phase will be based on a roadmap and the result of the projects' evaluations carried out by SHERPA's Scientific Advisory Panel. Three main activities will be carried out during the process:

- The elaboration of a **Transferring Plan**, to monitor and coordinate the transferring process.
- A **Joint Transferring Seminar**, where SHERPA partners will debate the results and conclusions of the testing WP and agree on the main messages to transfer and how to share their results and conclusions of the Testing WP to the other regions and municipalities within SHERPA's territories and further across the MED area.
- **National Transference Seminars** in each country in order to carry out the transference process and reach a maximum number of regions and municipalities within the involved countries and surrounding MED areas.

At a later stage, during the Capitalisation phase, the **Regional Capitalisation Workshops** will be carried out, which will involve municipalities within the organizing regions as well as across surrounding areas.

The SHERPA Associated Partners -mainly Covenant Supporters or Coordinators within the Covenant of Mayors initiative- will be of great help to maximize the number of regions and municipalities attending the events and seminars.



CAPITALISING

The aim of this phase is to ensure the capitalisation of SHERPA's results, together with other EU, National, Regional and Local programmes all over the Mediterranean area and create a multiplier effect on the SHERPA outcomes and solutions, as well as the production of regional commitments to implement EEB projects (8) and the engagement of regions and municipalities in developing energy efficiency plans and strategies (50).

The idea is to build on the link between regional and local levels established during the testing phase, with invaluable contributions from project partners such as the CPMR and associates such as Latin Arc, which can spread results over the Mediterranean area through policy recommendations, Memorandum of Understanding and agreements.

Between the end of 2018 and the end of 2019 the final results of the SHERPA project will be shared in an **Online Capitalisation Forum** fed especially by the foreseen **Regional Capitalisation Workshops**. **One final Agreement** will also be produced and a **Memorandum of Understanding** will be signed by the Regions implementing SHERPA's Methodology.

A **Joint Action Plan (JAP)** developed by SHERPA will be approved in the IMC-CPMR General Assembly at the



Palazzo Ignazio Silone. Regional Government Presidency. L'Aquila, Abruzzo Region

very end of the project and shared with the municipalities involved in the capitalisation phase of SHERPA and with any other local authority interested in EEB in Public Building.

The capitalisation set of toolkits and the JAP will be available after the project and their durability will be ensured thanks to the IMC-CPMR Task Force on Energy Efficiency.

MAIN OUTPUTS

SHERPA's Main Outputs are:



8 regional commitments to implement EEB projects



1 Shared MED Information System



100 regional EEB projects



50 regional and local administrations involved



1 EEB training course (learning by doing)



8 Financial operative schemes



1 EEB MED Joint Action Plan



6 National Transference Seminars



9 Capitalisation Regional workshops



1 EEB in public buildings' capitalisation set of toolkits



1 Online Capitalisation Forum

PROJECT'S MILESTONES AND KEY DELIVERABLES



Testing

- Preliminary study on EEB strategies; state of the art study
- Pilot plan for the coordination of the 4 pilot activities
- 4 Pilot activities final reports
- 100 ERB projects
- Sherpa Building Card

Transferring

- Transferring plan
- Joint Transferring Seminar
- National Transference Seminars

Capitalising

- Capitalisation plan
- Capitalisation Toolkits Guide and Set of Toolkits
- Online capitalisation Forum
- Regional Capitalisation Workshops
- Joint Action Plan



PARTNERSHIP

PARTNERS

- **Department of Territory and Sustainability – Government of Catalonia – ES (Lead Partner)**
- Valencian Institute of Building (IVE) – Government of Valencia – ES
- International Centre for Numerical Methods in Engineering (CIMNE-UPC) – ES
- Conference of Peripheral Maritime Regions of Europe – Intermediterranean Commission (CPMR-IMC) – FR
- National Association of Local Authorities, Associations and Companies for Waste Management, Energy Management and District Heating (AMORCE) – FR
- Emilia-Romagna Region – IT
- Lazio Region – IT
- Abruzzo Region – IT
- Ministry for Gozo – MT
- Dubrovnik Neretva Regional Development Agency (DUNEA) – HR
- Centre for Renewable Energy Sources and Saving (CRES) – EL
- Region of Crete – EL

ASSOCIATED PARTNERS

- ES: ICAEN, AMB, Diputació de Barcelona, Arco Latino, Generalitat Valenciana.
- IT: ENEA, Regioni Umbria, Calabria, Abruzzo.
- MT: Gozo Development Agency
- EL: Municipalities of Hersonissos and of Heraklion.

PARTNERSHIP

The project's partnership includes regional and national public authorities, higher education and research centres, interest groups, organisations, sectoral and agencies, and foresees also the involvement of relevant EEB stakeholders. The partnership is wide in terms of

type and geographical coverage. The inclusion in the project of the European Network CPRM (Conference of Peripheral Maritime Regions of Europe) is an asset because it allows extending and bringing debate into a much wider arena.



PARTNERSHIP

ASSOCIATED PARTNERS FORUM - The Observers

In order to involve more regions and municipalities, **SHERPA's Associated Partners Forum (APF)** has been created. By joining this Forum, local authorities can acquire the **Observer** status, a formula by which all those regions and municipalities interested in SHERPA can get involved in the project, have direct access to all the project's information and be part of the APF.

SHERPA's Associated Partners Forum will give the opportunity to those stakeholders directly or indirectly involved in the field of energy efficiency in public buildings to:

- Monitor the testing (WP3), Transferring (WP4) and Capitalising (WP5) phases of the project
- Benefit from SHERPA's results, access the EEB toolkit & online Capitalisation Forum
- Participate in the Regional Training WG's sessions
- Transfer the testing phase on observer's municipalities
- Obtain SHERPA's Building card

The form to become an observer can be accessed from SHERPA website's homepage (<https://sherpa.interreg-med.eu/>)



PROJECT PARTNERS



Contact:

Email: wxmarti@gencat.cat

Website: <https://sherpa.interreg-med.eu/>

Twitter: @SherpaMED

Facebook: @SHERPAMED

PROJECT CO-FINANCED BY THE EUROPEAN REGIONAL DEVELOPMENT FUND

<https://www.interreg-med.eu/>