

BINGO SOLUTIONS

Bingo will deliver innovative solutions to help water end users dealing with the effects of climate change.



Global climate modelling and downscaling of climate variables



Integrated water cycle analysis and modelling the impacts of extreme events



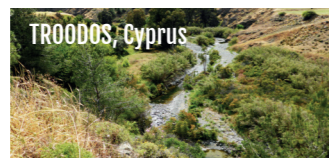
Risk management strategies for near-term climate change including extreme weather



From science to society: multisectorial approach and international perspective

Bingo Research Sites

All solutions will be co-produced, tested and validated by a range of key end users at six research sites across Europe.



PROJECT PARTNERS



LABORATÓRIO NACIONAL DE ENGENHARIA CIVIL

www.lnec.pt
Portugal
(Project Coordinator)

KWR Watercycle Research Institute

<http://kwrwater.nl>
The Netherlands

IWW

<http://iww-online.de/en>
Germany

AQUATEC

www.aqualogy.net/en
Spain



Norwegian University of Science and Technology

www.ntnu.edu
Norway

InterSus
SUSTAINABILITY SERVICES

www.intersus.eu
Germany

Freie Universität Berlin

www.fu-berlin.de/en
Germany

spi
Sociedade Portuguesa de Inovação

www.spieurope.eu
Portugal

THE CYPRUS INSTITUTE
RESEARCH • TECHNOLOGY • INNOVATION

www.cyi.ac.cy
Cyprus

I.A.CO Ltd
Environmental & Water Consultants

www.iaco.com.cy
Cyprus

EPAL
Grupo Águas de Portugal

www.epal.pt
Portugal

CIMLT
COMUNIDADE INTERMUNICIPAL DA LEZIRIA DO TEJO

www.cimlt.eu
Portugal



Ajuntament de Badalona

<http://badalona.cat>
Spain

Aigües de Barcelona

www.aiguesdebarcelona.cat
Spain

Vitens

www.vitens.nl/english
The Netherlands

WUPPERVERBAND
für Wasser, Mensch und Umwelt

www.wupperverband.de
Germany

DGADR Direção-Geral de Agricultura e Desenvolvimento Rural

www.dgadr.mamaot.pt
Portugal

AMB Àrea Metropolitana de Barcelona

www.amb.cat
Spain

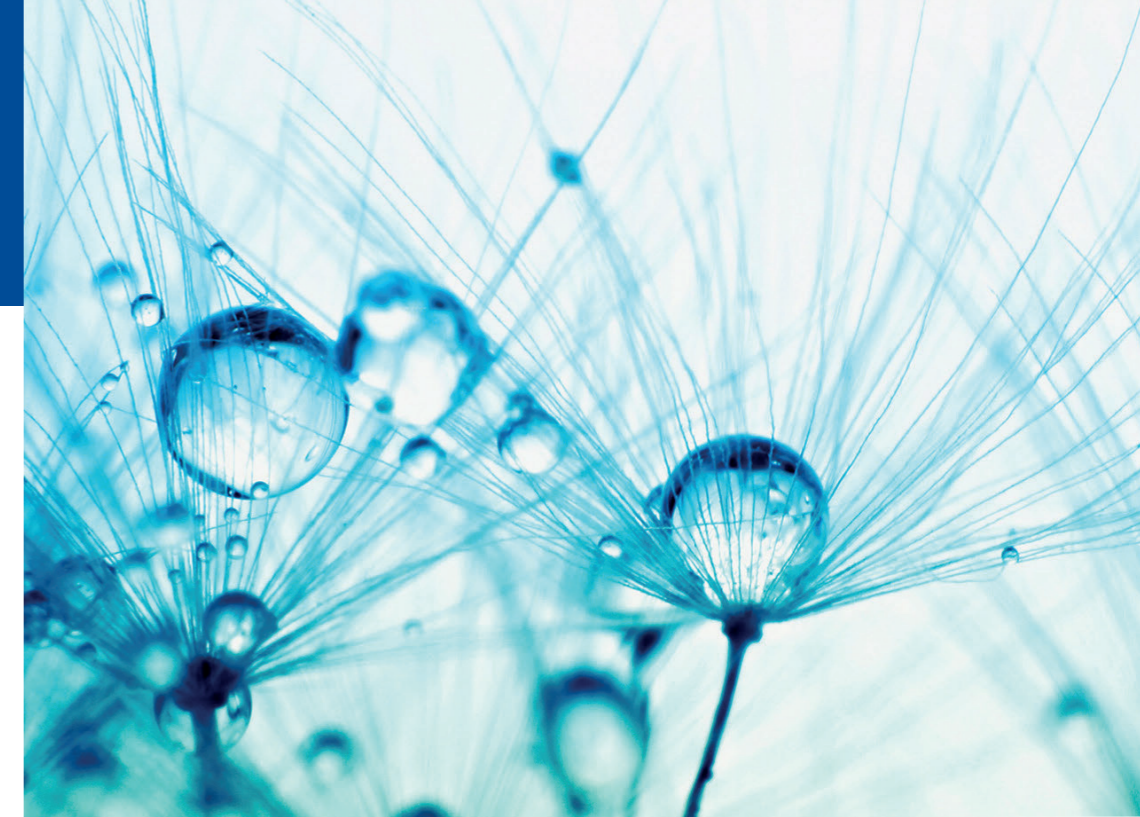
provincie Gelderland

www.gelderland.nl
The Netherlands



CITY OF BERGEN

www.bergen.kommune.no
Norway



BINGO
a better future under
CLIMATE CHANGE

BRINGING INNOVATION TO ONGOING WATER MANAGEMENT

www.projectbingo.eu



The BINGO project has received funding from the European Union's Horizon 2020 Research and Innovation programme, under the Grant Agreement number 641739. This brochure reflects only the author's view and the Commission is not responsible for any use that may be made of the information it contains.

Follow us:



@EU_BINGO



projectbingo.eu



Join the project mailing list at:
www.projectbingo.eu

CONTEXT

PROJECT OBJECTIVES

WORKPLAN

The Horizon 2020 project BINGO: Bringing INnovation to onGOing water management - a better future under climate change (2015-2019) aims at providing practical knowledge and tools to end users, water managers, decision and policy makers affected by climate change to enable them to better cope with all climate projections, including droughts and floods.

Led by Laboratório Nacional de Engenharia Civil (LNEC, Portugal), the project involves 20 European Partners from six countries, including research and innovation centres, water authorities, water users and companies.

BINGO will provide demand-driven solutions for specific climate related challenges, in particular for highly vulnerable water resources of strategic importance. It will address average and extreme conditions of climate change scenarios in six areas across Europe: Portugal, Spain, Cyprus, Germany, the Netherlands and Norway.

1. Provide improved predictions of the distribution of relevant climate variables, at the temporal scale required for modelling both average situations and extremes at the regional and local level.
2. Engage water end users from the six research sites in Europe in a knowledge alliance designed to build a shared awareness and perception of challenges and opportunities.
3. Assess the impact of extreme weather events, as well as of average climate change conditions, on water quality and quantity and the subsequent effect on key sectors in society.
4. Explore and categorise risk management measures, technologies and other solutions to mitigate climate impacts on the water cycle.
5. Provide a portfolio of validated risk treatment strategies, integrating technological and non-technological alternatives, to better cope with challenges posed by climate change.

- Work Package 1**
Coordination, management and intellectual property rights
- Work Package 2**
Climate predictions and downscaling to extreme weather
- Work Package 3**
Integrated analysis of the water cycle
- Work Package 4**
Assessment of the impacts of extreme weather events
- Work Package 5**
Developing risk treatment and adaptation strategies for extreme weather events
- Work Package 6**
Ensuring excellence and actionable research
- Work Package 7**
Dissemination, communication and exploitation



PROJECT OUTCOMES

- Improved and downscaled climate predictions and projections of climate variables;
- Integrated analysis of the impacts of climate change scenarios on the water cycle;
- Improved dialogue between different actors, including decision makers;
- Increased public awareness of the effects of climate change on floods and droughts;
- More efficient management of water resources in Europe.

Bingo runs from July 2015 to June 2019.